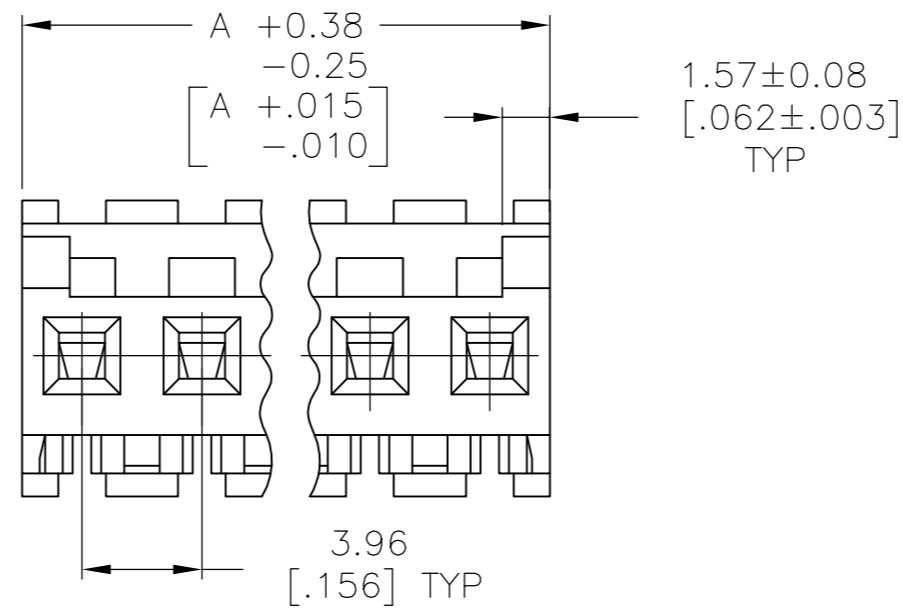
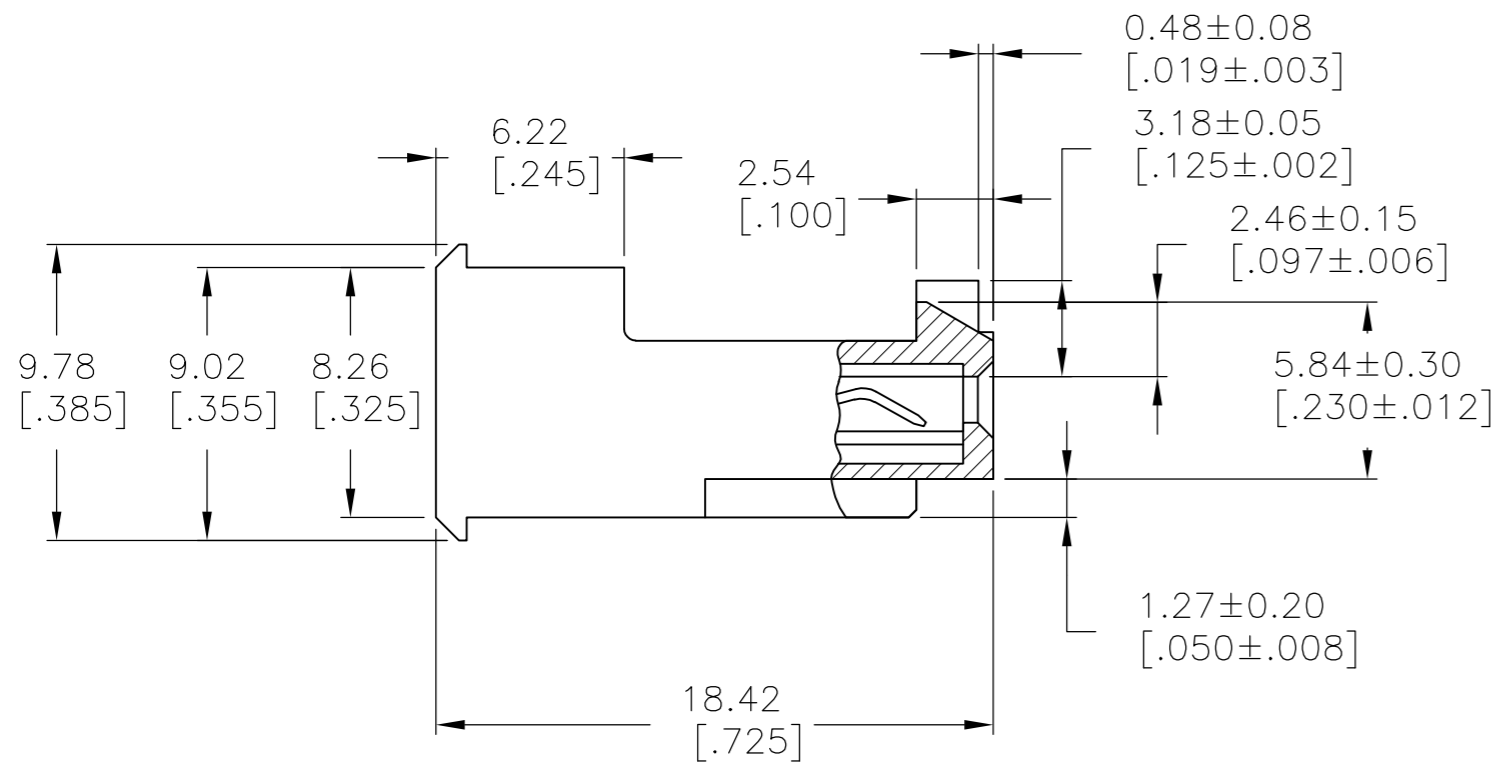
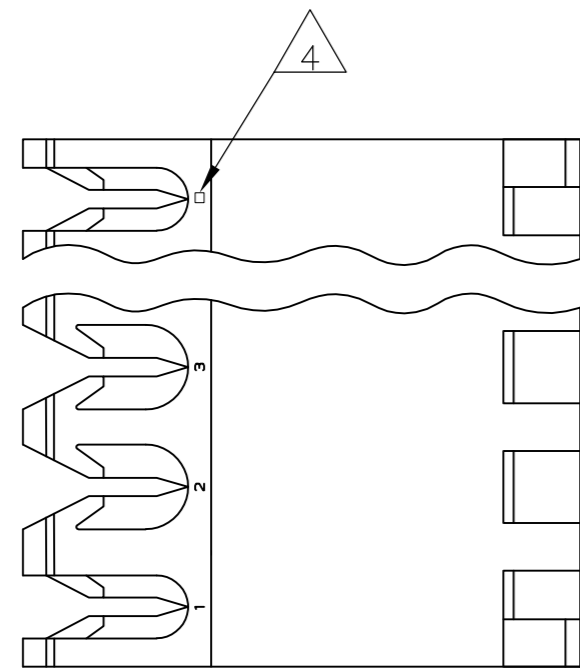


THIS DRAWING IS UNPUBLISHED. RELEASED FOR PUBLICATION
 © COPYRIGHT BY TYCO ELECTRONICS CORPORATION. ALL RIGHTS RESERVED.

LOC	DIST	REVISIONS					
CM	00	P	LTR	DESCRIPTION	DATE	DWN	APVD
		D		ECO-07-012852	04JUN07	KW	DB



55.47[2.184]	14	4-644465-4
51.51[2.028]	13	4-644465-3
47.55[1.872]	12	4-644465-2
43.59[1.716]	11	4-644465-1
39.62[1.560]	10	4-644465-0
35.66[1.404]	9	3-644465-9
31.70[1.248]	8	3-644465-8
27.74[1.092]	7	3-644465-7
23.77[.936]	6	3-644465-6
19.81[.780]	5	3-644465-5
15.85[.624]	4	3-644465-4
11.89[.468]	3	3-644465-3
7.92[.312]	2	3-644465-2
55.47[2.184]	14	1-644465-4
51.51[2.028]	13	1-644465-3
47.55[1.872]	12	1-644465-2
43.59[1.716]	11	1-644465-1
39.62[1.560]	10	1-644465-0
35.66[1.404]	9	644465-9
31.70[1.248]	8	644465-8
27.74[1.092]	7	644465-7
23.77[.936]	6	644465-6
19.81[.780]	5	644465-5
15.85[.624]	4	644465-4
11.89[.468]	3	644465-3
7.92[.312]	2	644465-2
DIM A	NO. OF CIRCUITS	PART NO.

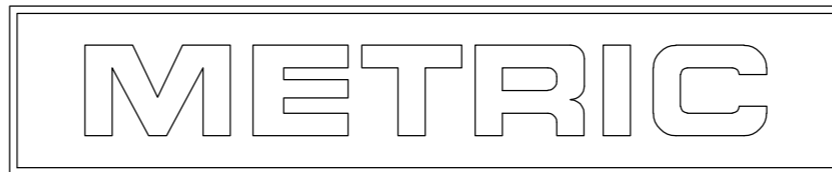
1 MATERIAL: CONNECTOR - NYLON UL94-V2 (ORANGE)
 CONTACTS - 0.30[.012] THICK COPPER ALLOY
 (BRIGHT TIN-LEAD 0.00203[.000080] MIN. THICK FOR CONTACTS 644465-2 THRU 1-644465-4)
 (WHISKER MITIGATED TIN 0.00203[.000080] MIN THICKNESS OVER NICKEL UNDERPLATE FOR 3-644465-2 THRU 4-644465-4).

2 CONTACTS ACCEPT 18 AWG WIRE WITH 2.41[.095] MAX INSULATION DIAMETER.
 3 CONTACTS MUST ACCEPT 1.14±0.03[.045±.001] POST AND REMAIN LOCKED IN POSITION.

4 IDENTIFICATION NUMBER FOR LAST CIRCUIT MAY NOT APPEAR ON ALL ASSEMBLIES.

5 DIMENSIONS IN BRACKETS ARE IN INCHES.

6 HOUSING FEATURES ARE: FEED-THRU WITH LOCKING RAMP AND POLARIZING TAB.



THIS DRAWING IS A CONTROLLED DOCUMENT.		DWN S. CARPENTER 14AUG2003	Tyco Electronics Corporation Harrisburg, Pa 17105-3608	
DIMENSIONS: mm [INCHES]		CHK D. BOSSI 14AUG2003	NAME MTA 156 CONNECTOR ASSEMBLY, 18 AWG, STANDARD	
TOLERANCES UNLESS OTHERWISE SPECIFIED: 0 PLC ± - 1 PLC ± - 2 PLC ± - 3 PLC ± 0.13 [.005] 4 PLC ± - ANGLES ± -		APVD D. BOSSI 14AUG2003	RESTRICTED TO	
MATERIAL 1		PRODUCT SPEC 108-1051	SIZE A2	CAGE CODE 00779
FINISH 1		APPLICATION SPEC 114-1020	DRAWING NO C=644465	SCALE 4:1
		WEIGHT -	SHEET 1	OF 1
		CUSTOMER DRAWING	REV D	